

STORIES AND STATISTICS

Understanding Homelessness in our Parks and Cities

NRPA Innovation Lab
Thursday, January 26, 2017

PANELISTS

Jesús Aguirre – Superintendent Seattle Parks and Recreation

Stephen C. Bentley – Superintendent, Raleigh Parks, Recreation and Cultural Resources

Brie Hensold – Principal, Sasaki, Boston



Burlington

Raleigh



Seattle

Sasaki
Research

AGENDA

1. **Homelessness** – Defining the Topic Today
 - Seattle
 - Raleigh
2. **Discussion:** What Does Homelessness Mean for Parks and Recreation?

HOMELESSNESS TODAY

**Sasaki research led by Gretchen Keillor, planner
with support from Brie Hensold and Ken Goulding**

research: context

DEFINING



SOMEONE

WITHOUT



**STABLE
HOUSING**



Individuals



Families



Youth



Now

Currently without housing



14 Days

Will soon be without

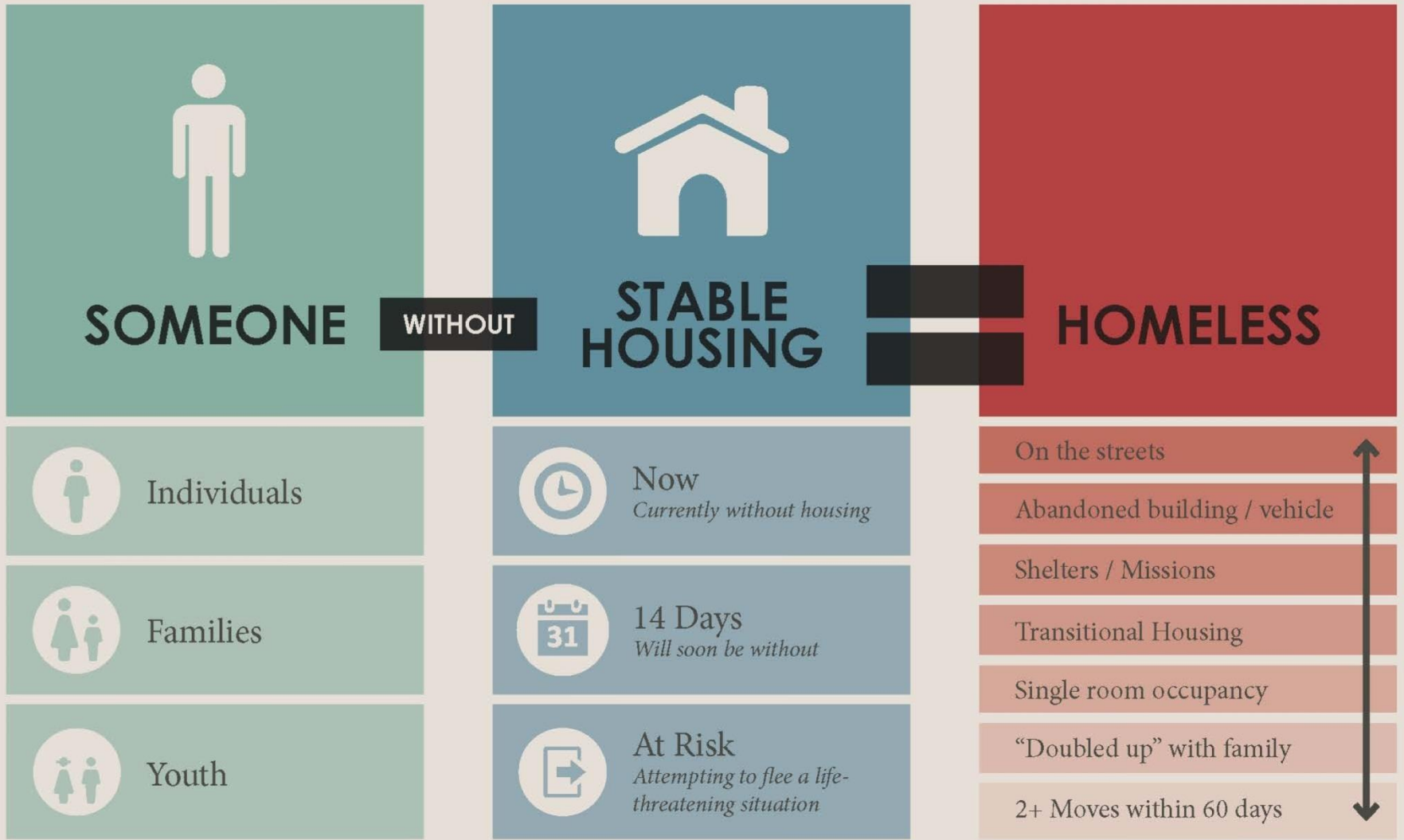


At Risk

Attempting to flee a life-threatening situation

research: context

DEFINING



research: context

HISTORY



PRE-CIVIL WAR

1800



- *Railroads / industrialization*
- *Urbanization*
- *Rise of wage labor*

Less Stable Jobs

https://www.google.com/url?sa=t&rct=j&q=&esrc=s&source=web&cd=1&cad=rja&uact=8&ved=0CCMQFjAAahUKewidhoaSpaTIAhUB7R4KHYx7DnQ&curl=http%3A%2F%2Fwww.pitt.edu%2F~super7%2F47011-48001%2F47461.ppt&usq=AFQjCNHJAKZn6oVvfxEY9D5qEr3NFaQWoA&sig2=0aBdENs_jSoyl2JLxjewQ&bvum=bv.104317490,d.cWw

<http://www.dceh.org/the-history-of-homelessness-in-america-1640s-to-present/>

<http://www.coalitionforthehomeless.org/the-catastrophe-of-homelessness/why-are-so-many-people-homeless/>

<http://www.medscape.com/viewarticle/481800>

<http://www.skidrowjournal.org/history-pg-2.html>

<http://mentalillness.umwblogs.org/20th-century/deinstitutionalization/problems-with-deinstitutionalization/>

research: context

HISTORY



PRE-CIVIL WAR

1800



- Railroads / industrialization
- Urbanization
- Rise of wage labor

Less Stable Jobs



POST-CIVIL WAR

1870

1879: Bowery Mission in NYC

- Post-war depression
- Veterans & Freed Slaves
- Unregulated capitalism

Suffering Economy

https://www.google.com/url?sa=t&rct=j&q=&esrc=s&source=web&cd=1&cad=rja&uact=8&ved=0CCMQFjAAahUKewidhoaSpaTIAhUB7R4KHx7DnQ&curl=http%3A%2F%2Fwww.pitt.edu%2F~super7%2F47011-48001%2F47461.ppt&usq=AFQjCNHJAKZn6oVvfxEY9D5qEr3NFaQWoA&sig2=0aBdENs_jSoyl2JtLxjewQ&bvmm=bv.104317490,d.cWw
<http://www.dceh.org/the-history-of-homelessness-in-america-1640s-to-present/>
<http://www.coalitionforthehomeless.org/the-catastrophe-of-homelessness/why-are-so-many-people-homeless/>
<http://www.medscape.com/viewarticle/481800>
<http://www.skidrowjournal.org/history-pg-2.html>
<http://mentalillness.umwblogs.org/20th-century/deinstitutionalization/problems-with-deinstitutionalization/>

research: context

HISTORY



PRE-CIVIL WAR

1800



- Railroads / industrialization
- Urbanization
- Rise of wage labor

Less Stable Jobs



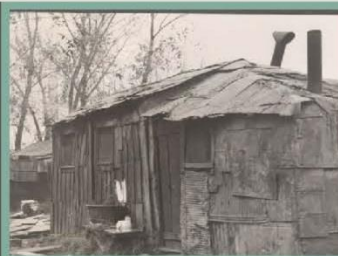
POST-CIVIL WAR

1870

1879: Bowery Mission in NYC

- Post-war depression
- Veterans & Freed Slaves
- Unregulated capitalism

Suffering Economy



GREAT DEPRESSION

1930

- Migrant workers become the norm
- Entire families affected
- Skid rows develop

Widespread Impact

research: context

HISTORY



PRE-CIVIL WAR

1800



- Railroads / industrialization
- Urbanization
- Rise of wage labor

Less Stable Jobs



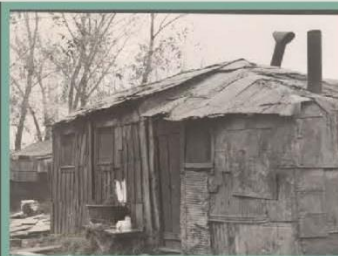
POST-CIVIL WAR

1870

1879: Bowery Mission in NYC

- Post-war depression
- Veterans & Freed Slaves
- Unregulated capitalism

Suffering Economy



GREAT DEPRESSION

1930

- Migrant workers become the norm
- Entire families affected
- Skid rows develop

Widespread Impact



URBAN RENEWAL

1950

- Clearing of skid rows
- Housing regulations (zoning, plumbing)
- SROs depleted

Systemic Changes

research: context

HISTORY



PRE-CIVIL WAR

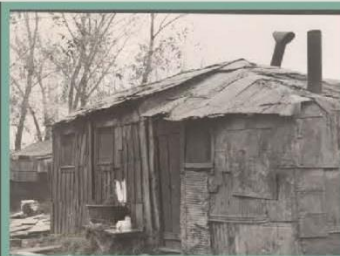
1800



POST-CIVIL WAR

1870

1879: Bowery Mission in NYC



GREAT DEPRESSION

1930



URBAN RENEWAL

1950

1974: Rosie's Place in Boston

1981/83: "Right to Shelter" Callahan v. Carey

1987: McKinney-Vento Homeless Assistance Act in federal court



CONSERVATIVE SOCIAL POLICY

1970

- Railroads / industrialization
- Urbanization
- Rise of wage labor

Less Stable Jobs

- Post-war depression
- Veterans & Freed Slaves
- Unregulated capitalism

Suffering Economy

- Migrant workers become the norm
- Entire families affected
- Skid rows develop

Widespread Impact

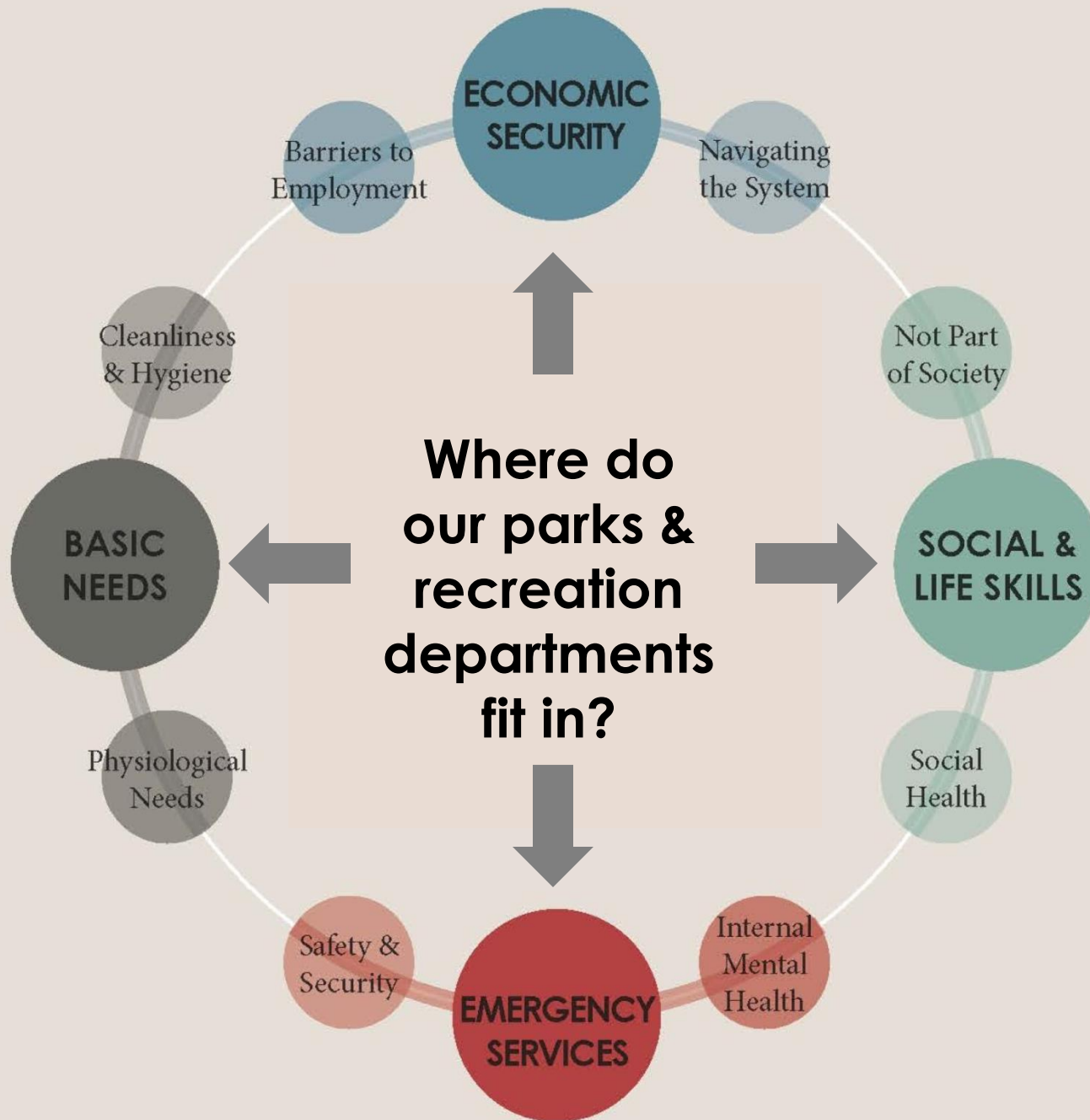
- Clearing of skid rows
- Housing regulations (zoning, plumbing)
- SROs depleted

Systemic Changes

- Deinstitutionalization
- Federal budget cuts
- Chronic homelessness begins

Embedded in System





WEBSITE RESOURCE

understandhomelessness.com

STRATEGIES

CLEAR FILTERS

ROLE

"I am a..."

- Business Owner (10)
- Concerned Individual (11)
- Designer (10)
- Non-Profit Employee (21)
- Public Official (21)

CHALLENGES

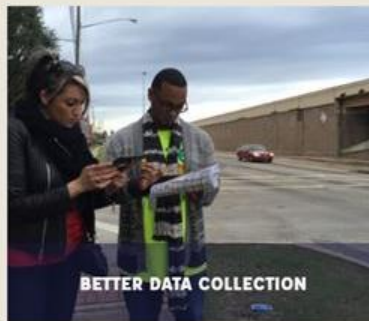
"...who wants to help with..."

- Basic Needs (8)
- Economic Opportunity (4)
- Emergency Services (3)
- Housing Provision (7)
- Operational Efficiencies (7)
- Social Support (4)

SOLUTION TYPE

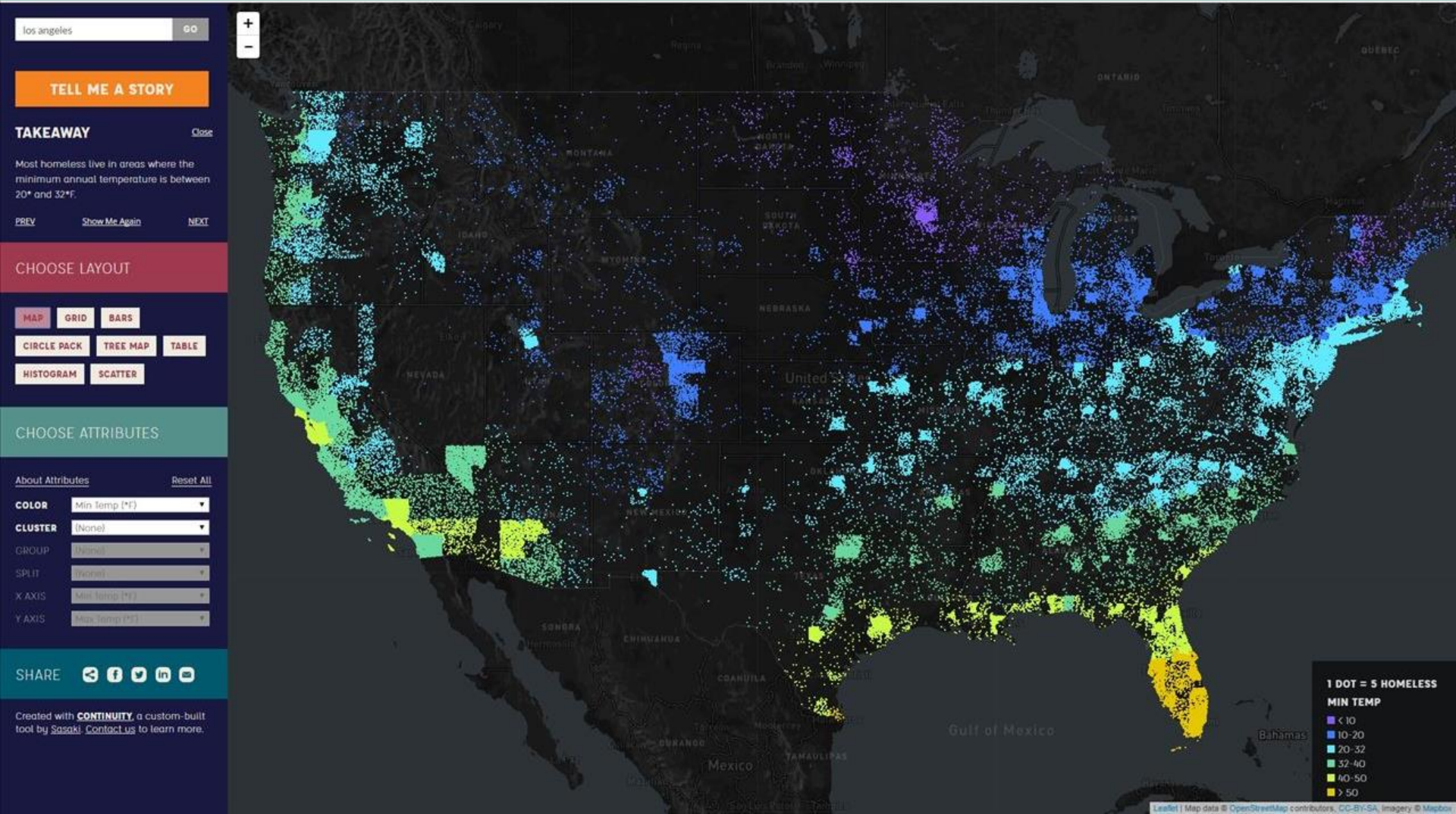
"...by doing one of these things..."

- Design (13)
- Policy (6)
- Program (24)



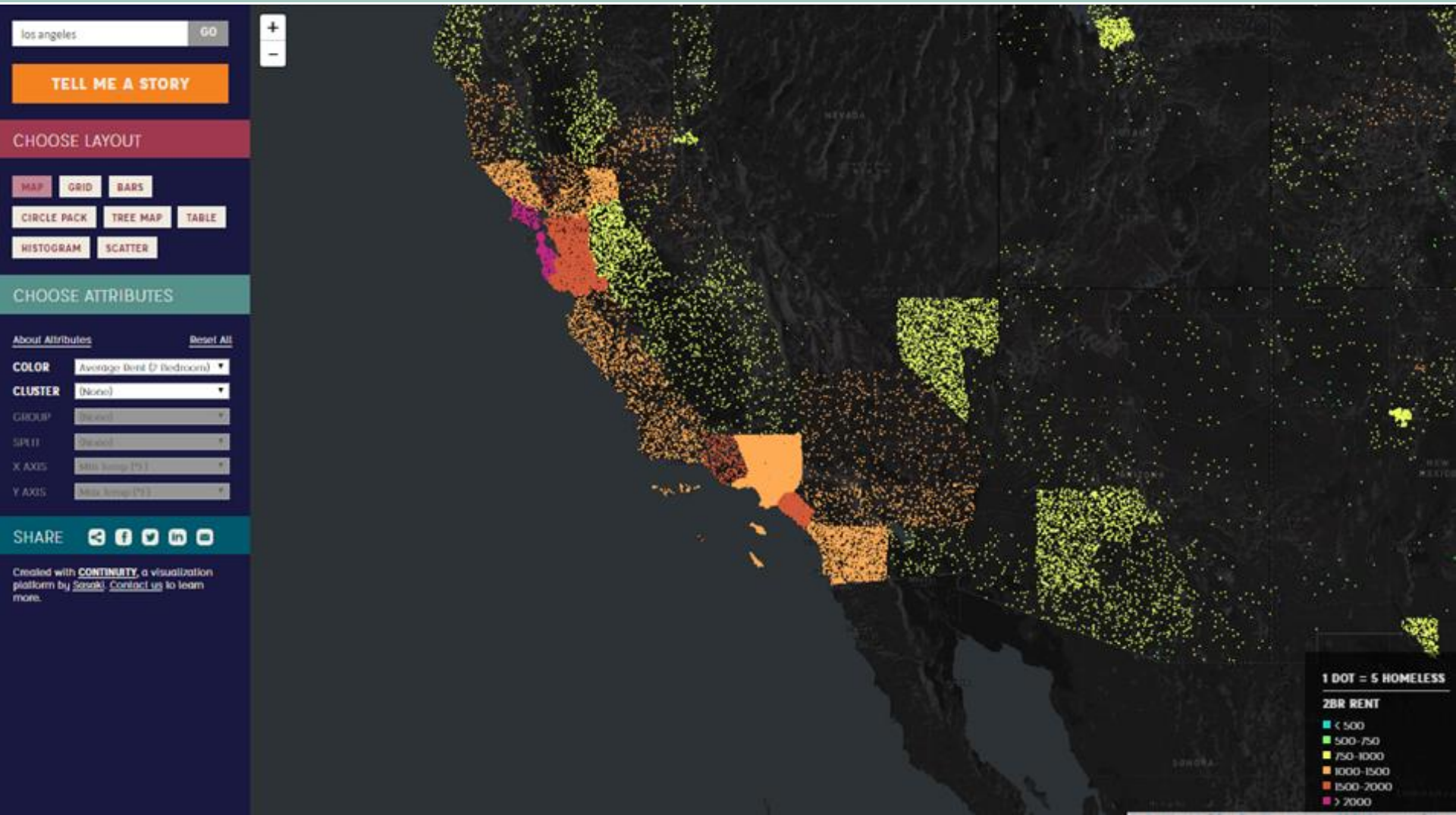
WEBSITE RESOURCE

understandhomelessness.com



WEBSITE RESOURCE

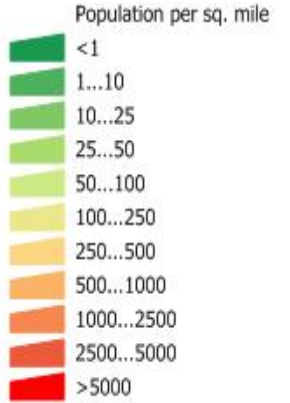
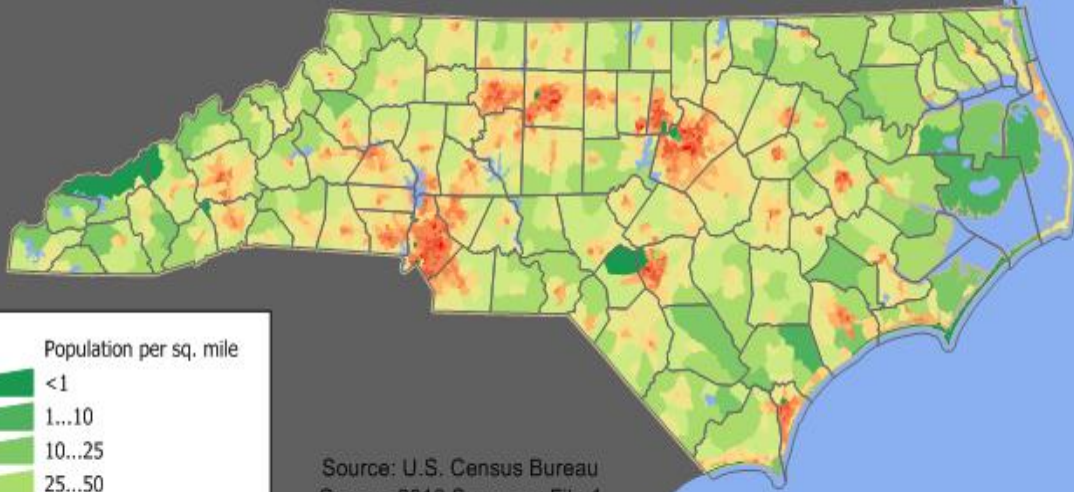
understandhomelessness.com





RALEIGH, NORTH CAROLINA

Moore Square Park:
A Catalyst for Community Dialogue



Source: U.S. Census Bureau
Census 2010 Summary File 1
population by census tract



Downtown Raleigh



818 HOMELESS INDIVIDUALS




SHELTERED
680 (83%)


UNSHELTERED
138 (17%)

VETERANS



78

ADULTS



656

CHILDREN



162

CHRONIC



94

DEMOGRAPHICS

MALE



540

FEMALE



277

TRANSGENDER



1

HOMELESS SUBPOPULATIONS

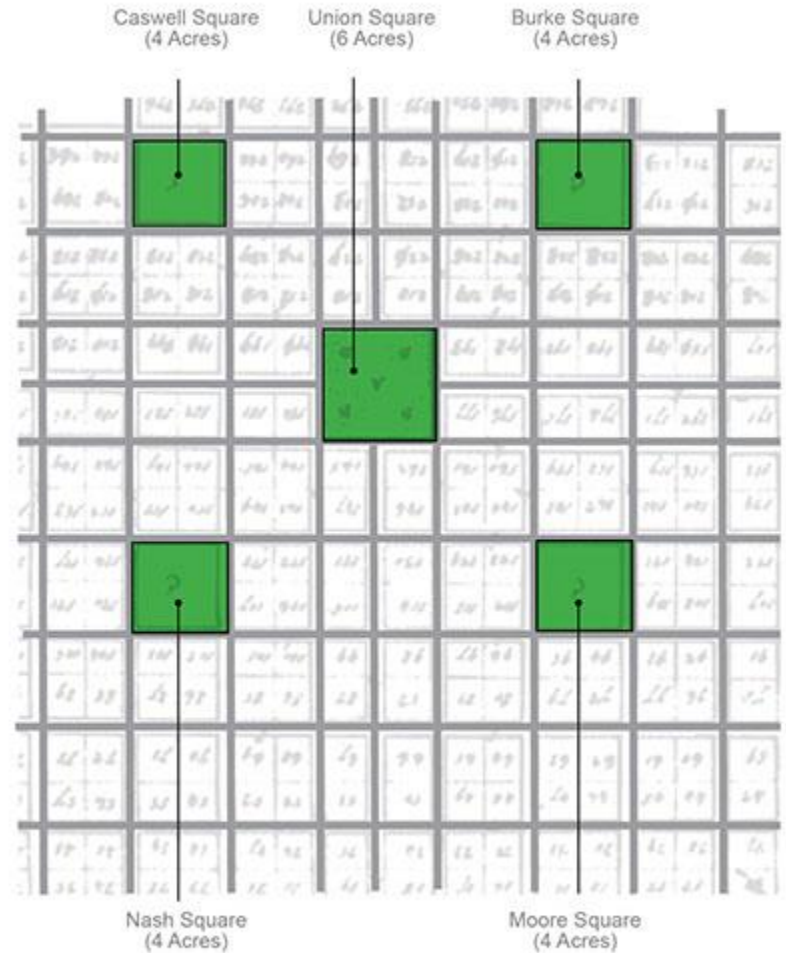
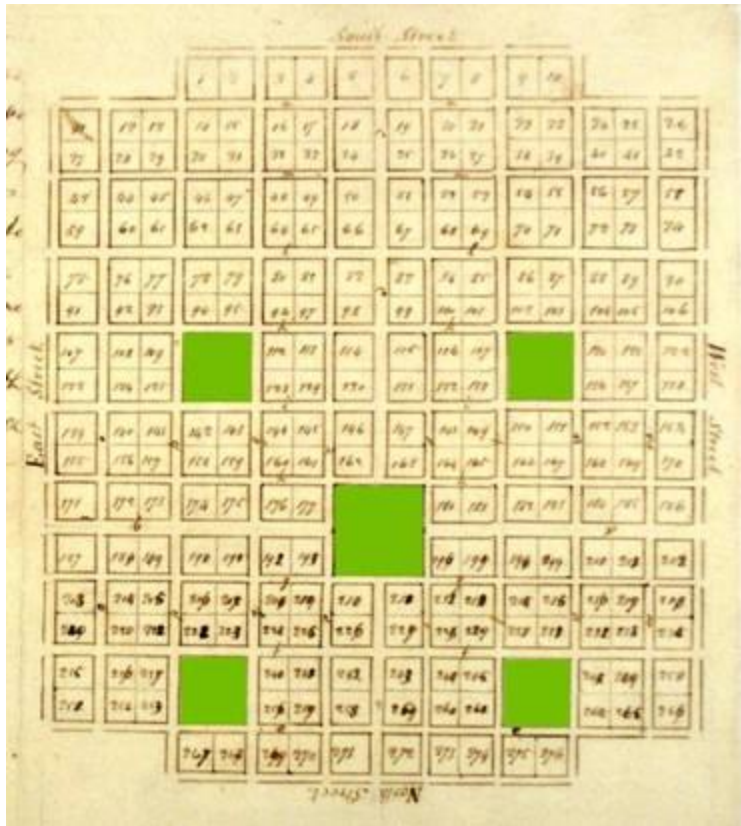


 **MENTAL ILLNESS 149**

 **DOMESTIC VIOLENCE 104**

 **SUSTANCE USE DISORDER 91**

 **HIV/AIDS 5**

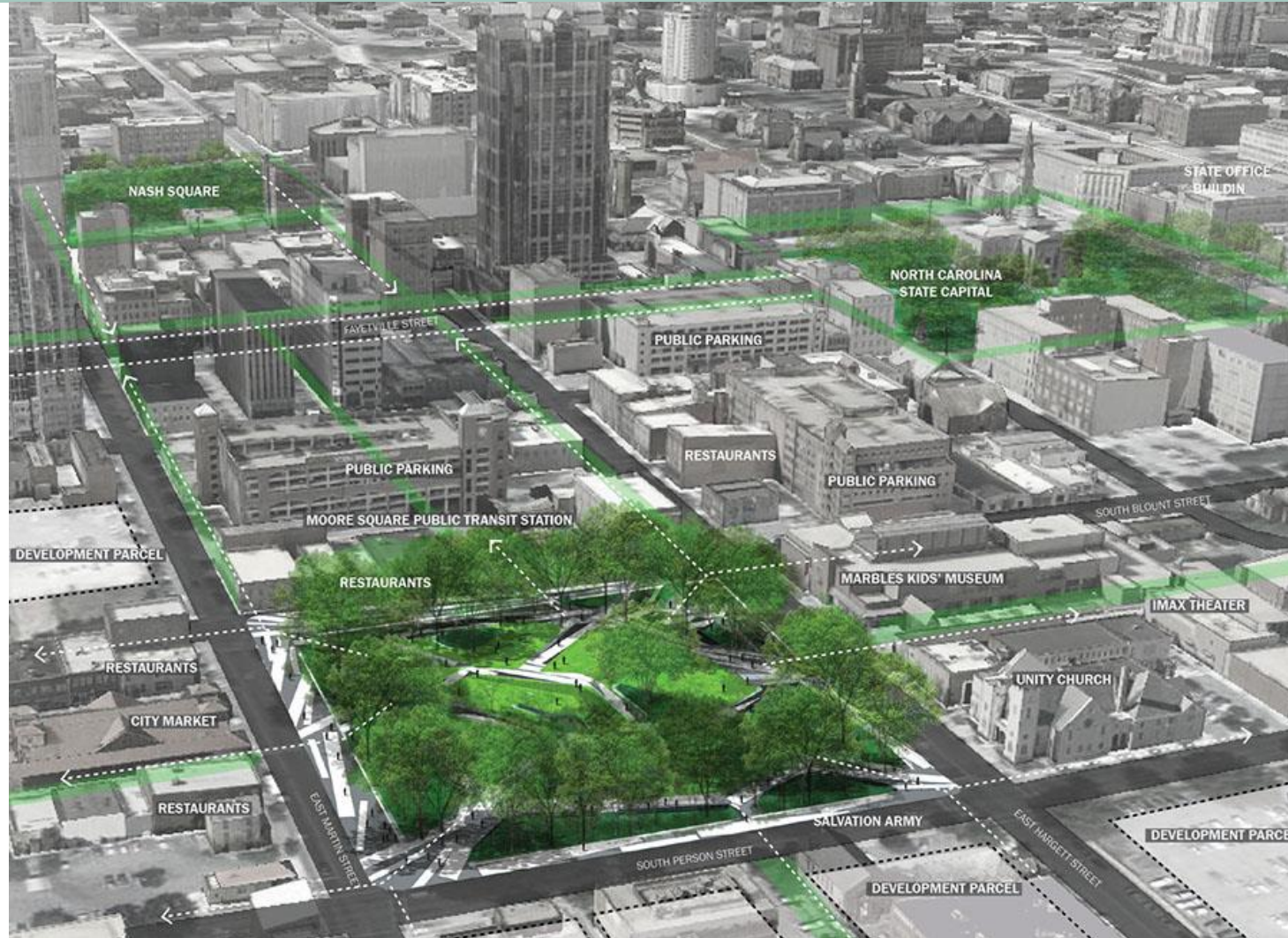


1792

William Christmas Plan for 18 Acres of Public Squares

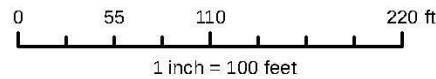


CITY APPROVES NEW MASTER PLAN



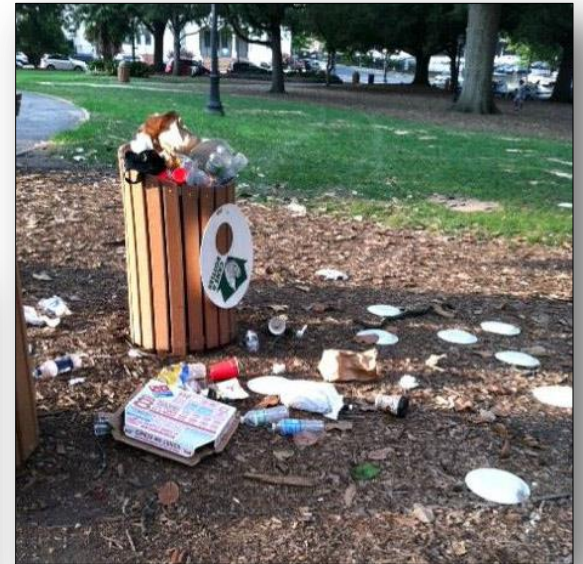
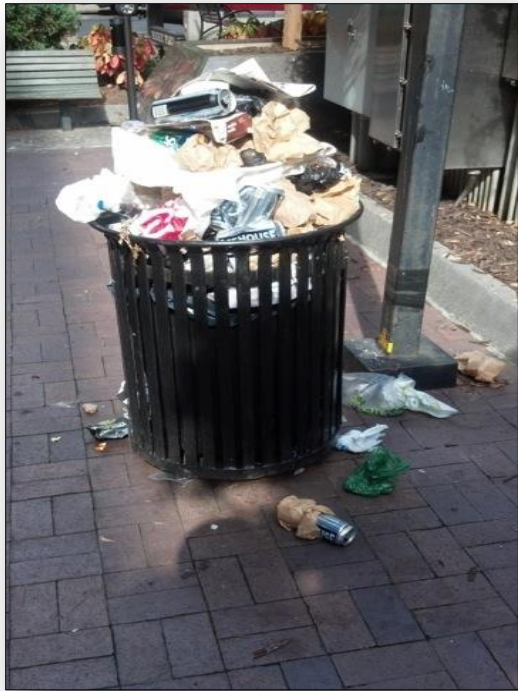


Moore Square Park



Disclaimer
Maps makes every effort to produce and publish the most current and accurate information possible. However, the maps are produced for information purposes, and are **NOT** surveys. No warranties, expressed or implied, are provided for the data therein, its use, or its interpretation.

WEEKENDS IN THE PARK



PERMITS REQUIRED

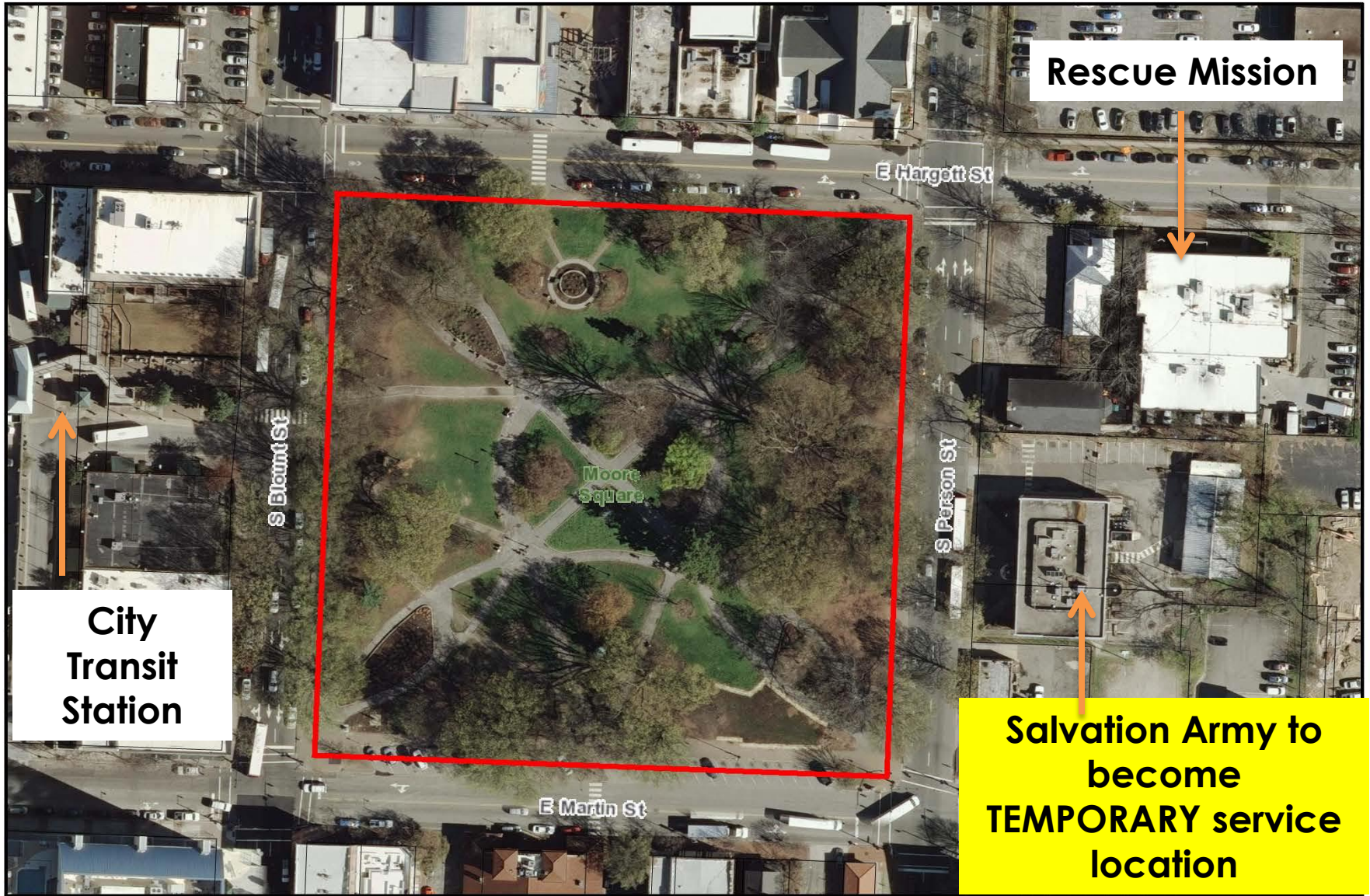
The screenshot shows a news article on the WRAL website. The main headline is "Raleigh parks director: Moore Square feedings 'out of control'". Below the headline, it says "Posted September 26, 2013". There are social media sharing icons for Facebook, Twitter, and LinkedIn. A video player is embedded in the article, showing a police officer speaking at a podium. Below the video, there is a caption: "Chief: No plans to arrest volunteers feeding homeless". To the right of the video, there is a text block starting with "RALEIGH, N.C. — The director of Raleigh's parks department sought advice from the city attorney about how to stop charity groups from feeding the homeless in Moore Square a month before police officers allegedly threatened the do-gooders with arrest for handing out meals, according to emails released to WRAL Thursday." Below this text is a small photo of people at a table. To the right of the article, there is a sidebar with various news categories: "HURRICANES: Images: Tracking Hurricane Matthew", "LEGAL NEWS: Wake Arrests", "OUT AND ABOUT: Nightlife Photos", "WEATHER: If track holds, Matthew could strike NC coast as Category 2 storm", and "LOCAL NEWS: Mother of student killed in..."



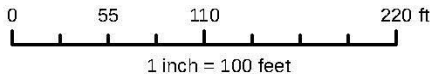


THE NEED TO PAUSE, TALK, AND COLLABORATE





Moore Square Park



Disclaimer
Maps makes every effort to produce and publish the most current and accurate information possible. However, the maps are produced for information purposes, and are NOT surveys. No warranties, expressed or implied, are provided for the data therein, its use, or its interpretation.



PARTNERSHIP TO END HOMELESSNESS

THE RALEIGH/WAKE PARTNERSHIP TO END AND PREVENT HOMELESSNESS

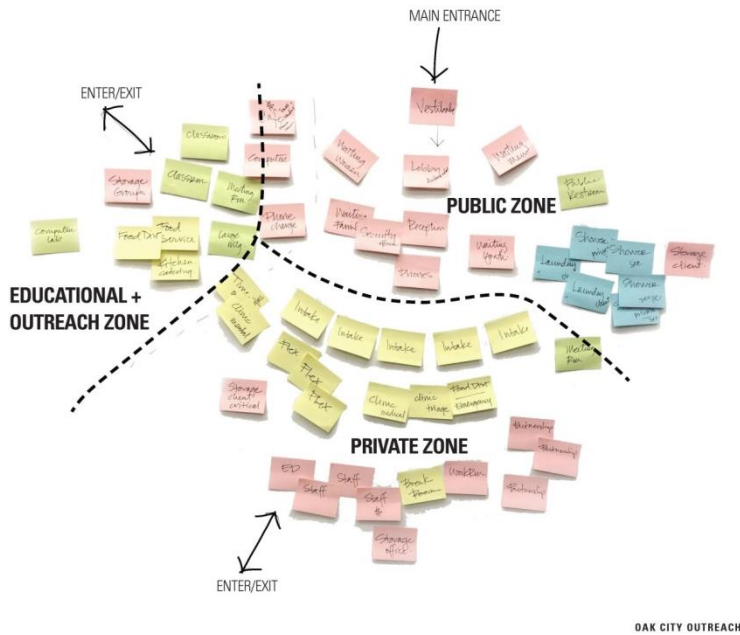




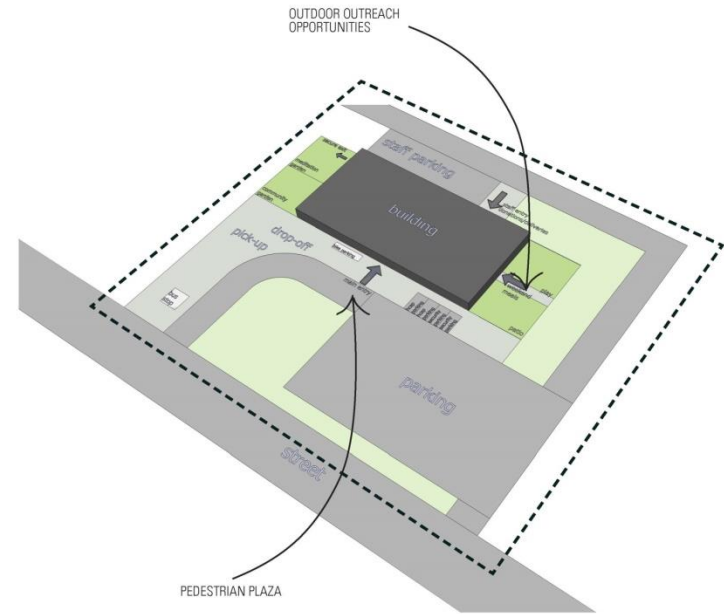


NEW CENTER UNDER DESIGN

GROUP EXERCISE: Space Adjacencies



Site Arrangement Diagram



SEATTLE'S HOMELESS CRISES



Jesús Aguirre
Superintendent
Seattle Parks and Recreation

SEATTLE'S HOMELESS CRISIS: STATE OF EMERGENCY

Mayor Ed Murray and King County Executive Dow Constantine declare a state of emergency and request immediate support from the state and federal governments. (11/2/2015)

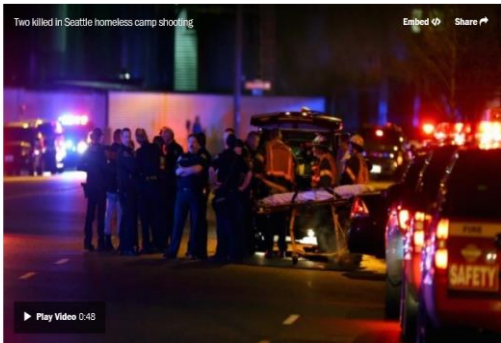
SEATTLE'S HOMELESS CRISIS: MAKING NATIONAL NEWS

The shootings took place as Seattle Mayor Ed Murray gave a speech on the city's approach to homelessness, just two miles north of the encampment.

Morning Mix

Slaying in 'the Jungle': Deadly shooting at Seattle homeless camp deepens crisis

By Michael E. Miller January 27, 2016



The Washington Post

2 Killed, 3 Hurt in Shooting at Seattle's 'The Jungle' Homeless Camp

by PHIL HELSEL, SHAMAR WALTERS and CASSANDRA VINOGRAD

Two people were killed and three others were injured in a "targeted" shooting at a Seattle homeless encampment on Tuesday, police said.

The Seattle Police Department said gunfire was reported at around 7:15 p.m. local time (10:15 p.m. ET) in a wooded area known as "The Jungle."



Two Killed in Shooting at Seattle Homeless Camp 1:50

NBC NEWS

News » World » Americas

Seattle shooting: Two dead and three injured after 'targeted' shooting in homeless camp

The shootings took place as Seattle Mayor Ed Murray gave a speech on the city's approach to homelessness

Emma Henderson | Wednesday 27 January 2016 | 5 comments



Like Click to follow The Independent US



INDEPENDENT



Seattle Parks & Recreation

FROM THE WEB Sponsored Links



Beyond Highway 1: Find Even More to Do in SLO CAL Visit San Luis Obispo County



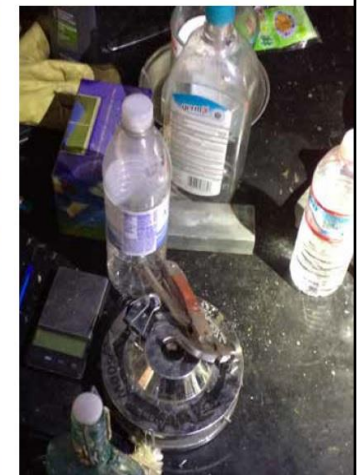
Before Applying For A Citi Card, Check If You Pre-Qualify

CONDITIONS OF THE GREENBELT AND I-5



THREATS TO HEALTH AND SAFETY

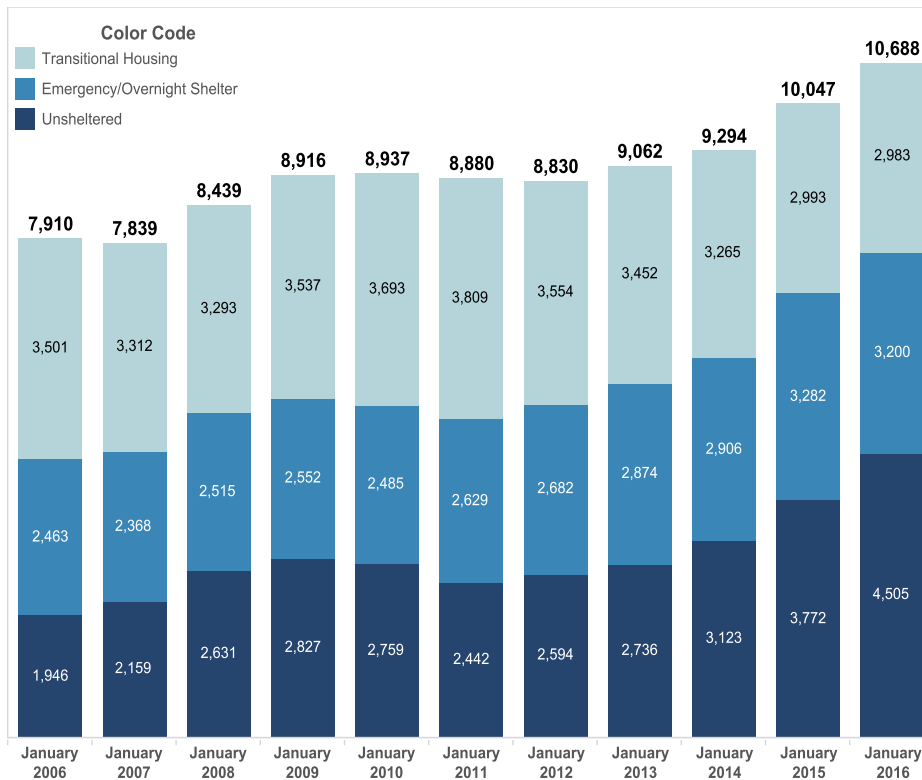
- Potential for fires
- Deferred maintenance on I-5
- Garbage
- Human waste
- Drug paraphernalia



CLEANING UP

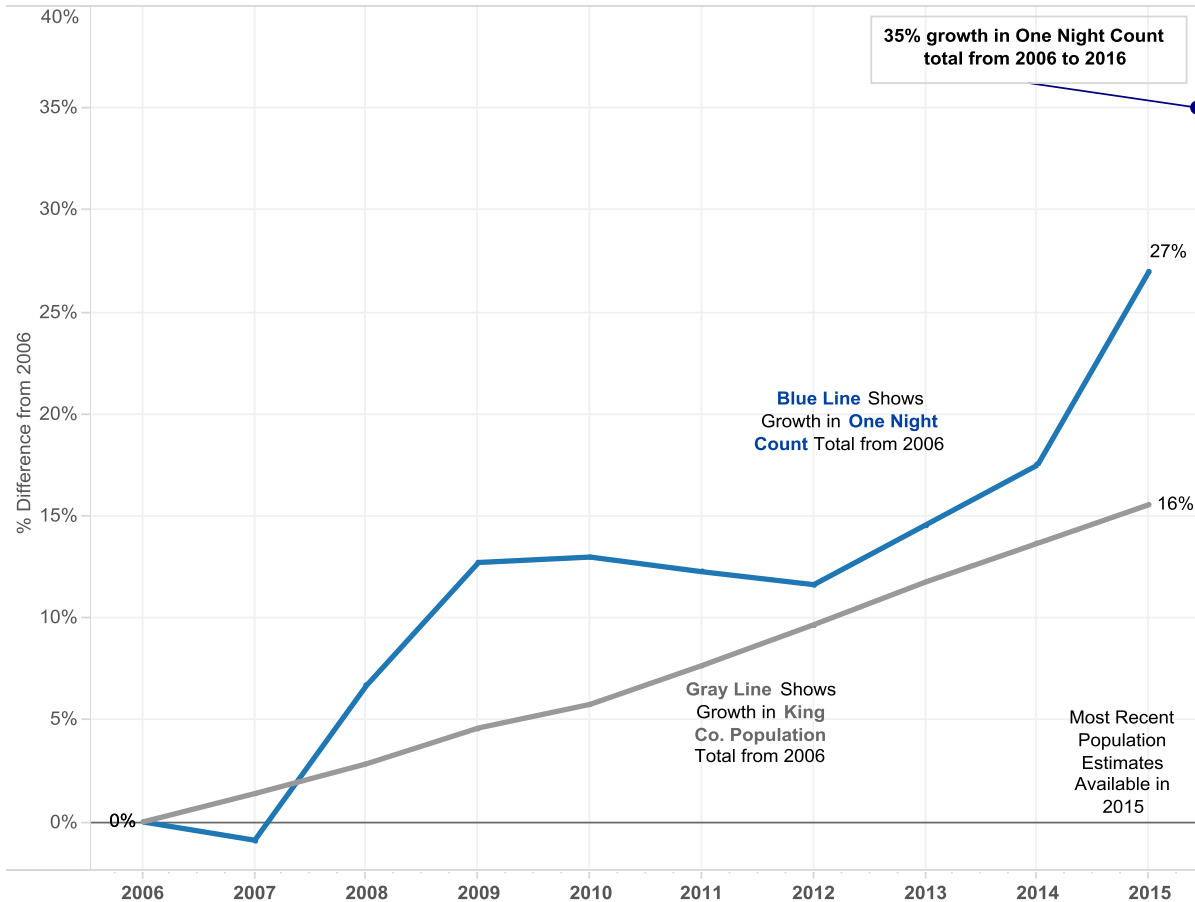


HOW DID WE GET HERE?



- One Night Count (ONC) tallies individuals experiencing homelessness on a single night each January
- The **total count has increased by 35%** since 2006 (7,910 to 10,688)
- The number of **unsheltered individuals more than doubled** (1,946 to 4,505)
- **2,942 unsheltered individuals** were counted **within Seattle** city limits during the 2016 ONC
- 2015 King County shelter/housing capacity (beds):
 - **Emergency Shelter: 3,691**
 - **Transitional Housing: 3,358**

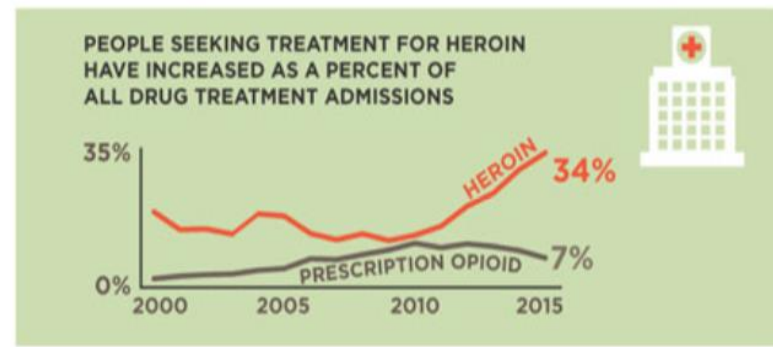
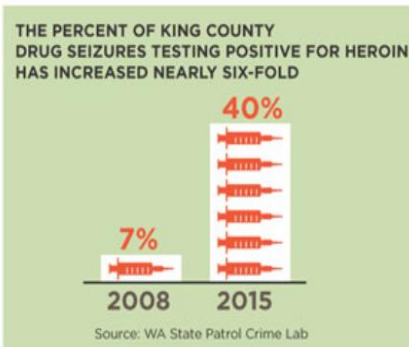
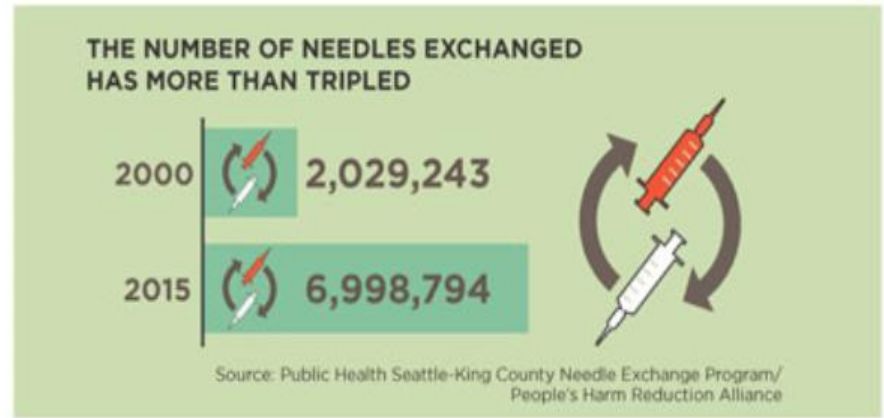
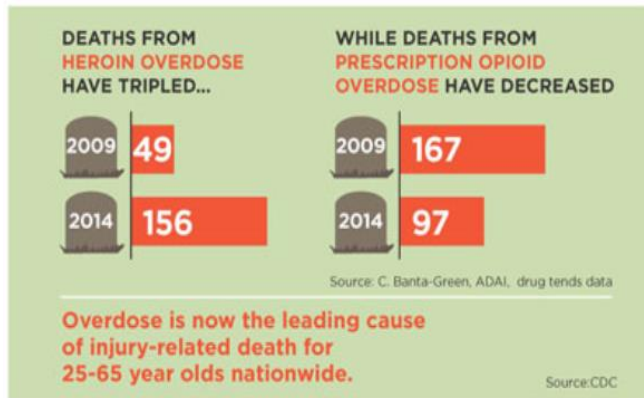
HOMELESSNESS IS INCREASING



- The most recent population estimates are available for 2015
- Over this shorter period, 2006 to 2015, the One Night Count tally increased by 27% - compared to a 16% increase in King County's population overall

- Sources: 2015 *One Night Count* reports – Seattle / King County Coalition on Homelessness. US Census Annual Population Estimates.

HEROIN AND OPIOID USE ARE AT CRISIS LEVELS

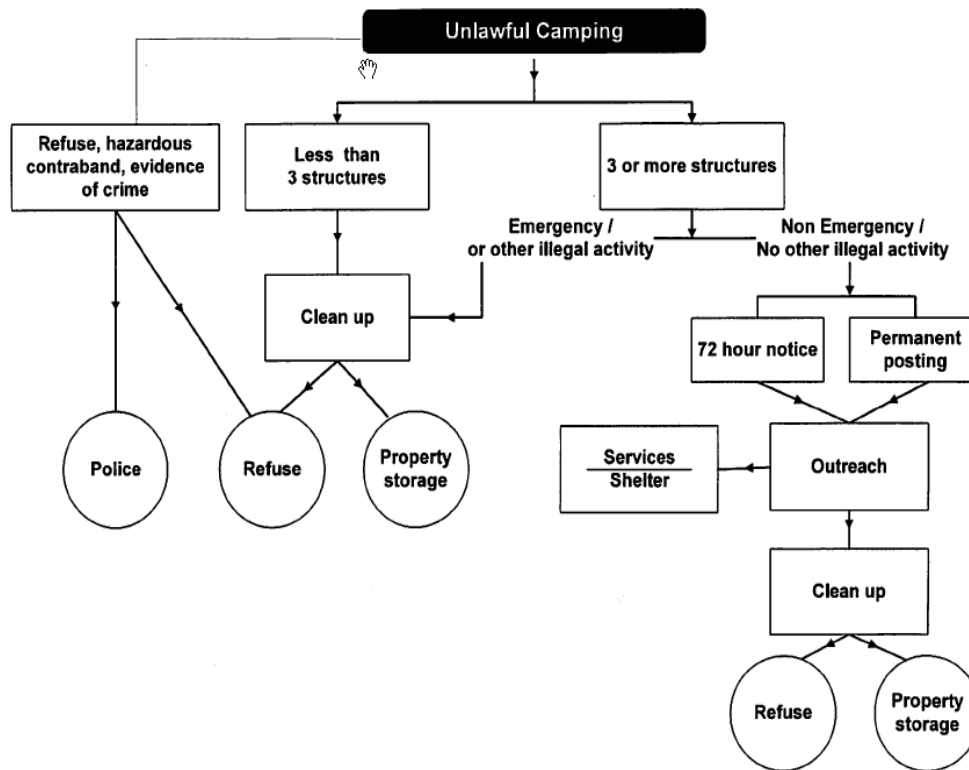


THE IMPACT ON SEATTLE PARKS AND RECREATION

- Across the City there are over 350 unauthorized camp sites, many on public property
- 80 of our 430 developed parks and *all* of our greenbelts have chronic camping
- Seattle's steep slopes and often soggy weather contribute to the challenge of cleaning up encampments



CURRENT CITY CLEANUP PROTOCOLS



CAMPING THE END ZONE



WHAT IS THE CITY DOING TO HELP?

- Pathways Home
- More emergency shelters
- Added 24-hour youth shelter
- Mobile Medical Clinic
- Authorized encampments
- Navigation Centers
- Rapid Rehousing Funding



WHAT CAN SEATTLE PARKS AND RECREATION DO?

- Healthy Activity Zones
- Urban Vegetation Management Plans
- Improving connectivity
- Programming for performance
- Staff awareness, training, and support



TODAY'S DISCUSSION TOPICS

1. What is the state of homelessness in our communities today?
2. How do parks and recreation departments fit in to strategies and solutions?
3. What can we do? What can't we do?
4. Who are our important partners?

RESOURCES

available on NRPA conference portal

1. <http://understandhomelessness.com/>
2. [“Can Data Have a Heart?” *Parks & Recreation Magazine*](#),
Gretchen Keillor, Sasaki homelessness project researcher